

The Sight Center of northwest ohio

The Shop is located at The Sight Center of Northwest Ohio. Our agency offers clinical and in home services to residents in Northwest Ohio and Southeast Michigan as well as parts of Central Ohio. The Shop is open to the public Monday thru Friday from 8:30a to 4:30p.

No appointment necessary.



1002 Garden Lake Parkway
Toledo, OH 43614
Phone: 419-720-3937
Toll Free: 800-624-8378

www.sightcenternwo.org
www.shopattheshop.org

Prices Subject to Change

**We Don't
Change
Vision.
We
Change
Lives.**



**Shop
Local
Ohio**

We make it easier for people who are blind or visually impaired to get the tools to live independently. In addition to providing solutions for everyday living, The Shop is a doorway to hope and a safe place to begin exploring the possibilities of doing more while seeing less.

Open Monday thru Friday 8:30a to 4:30p.



**Blindness and Low Vision
Products Sampler**

Friendly tips and tricks to make the environment more visually appealing

Brightness Contrast-Increase contrast by using light and dark objects together such as a white plate on a black placemat

Lighting Conditions-Adjust lighting by adding or removing lights, opening or closing shades, reducing glare and using sunglasses.

Object Size-Change how large things look by using objects that are bigger, reducing your distance from the object or using magnification.

Color Contrast-Use clear, bright colors to contrast item and fluorescent markings to easily identify things you refer to often (such as the buttons on a remote or microwave).

Visual Clutter-Eliminate patterns on shelf-liners, tablecloths and dinner plates and decrease clutter by organizing items and having a home for everything.

Pay special attention to steps and stairs, the bathroom, and the area next to your bed. These are the most common places for falls in the home. Make sure these areas are well lit. With stairs, you may want to add anti-slip, color-contrasting treads.

Don't be afraid of technology. Stay informed of new technologies and ways to learn.

Adapt your current fitness equipment by marking the settings with contrasting tape, raised dots, or large print.

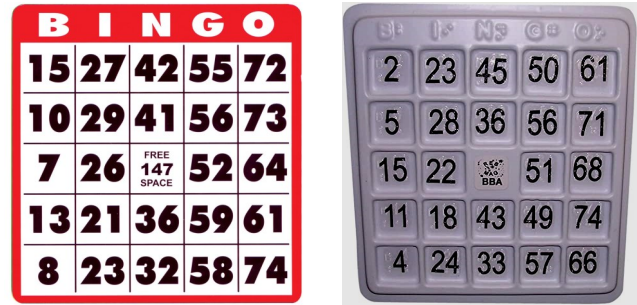
Visit your local community center or gym to get information about participating in or offering a safe and effective fitness program.

Activities for Daily Living

Playing Cards:
\$4.25-\$5.50



Bingo Cards:
\$1.70-\$12

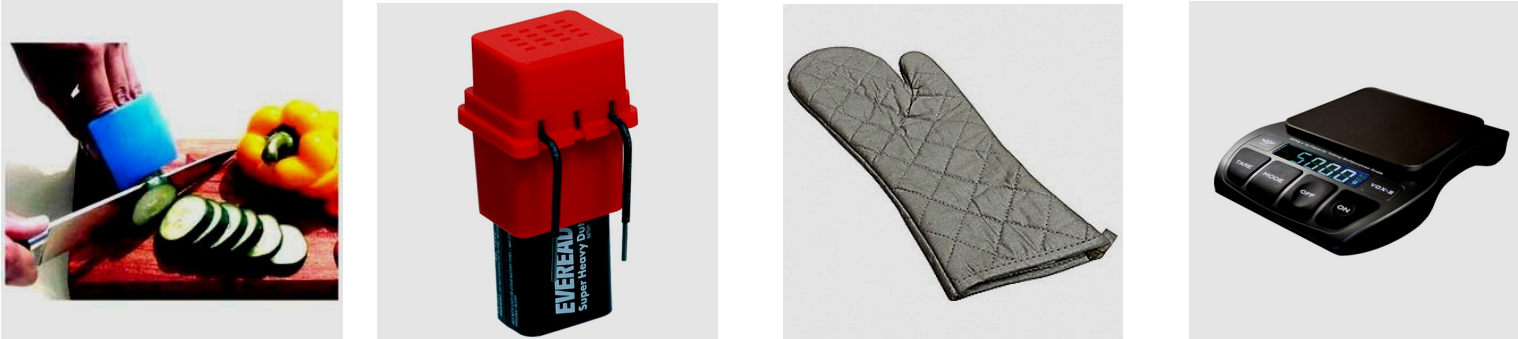


Sewing Tools:
\$2.75-\$20



Large Print Writing Tools:
\$3-\$24

Kitchen Tools
\$4-\$50



FILTERS

Eschenbach Solar Shields

Fit Over Sizes: Small, Medium, Large

Colors: Amber, Gray, Orange, Plum, Yellow



Eschenbach Solar Comfort

Non-Fit Over: One Size

Colors: Amber, Gray, Orange, Plum, Light Rose, Dark Rose, Yellow



Eschenbach Haven Night Drivers

Sizes: Medium, Rectangular M/L, Square Large

Colors: Night Haven Yellow



Eschenbach Haven Rose Filters

Sizes: Medium, Large

Colors: Dark Rose, Light Rose



Price: All Filters \$45

Filter Color Benefits

Amber:

- Heighten contrast
- Relieve glare
- Enhance visual acuity
- Relieve indoor lighting sensitivity

Gray:

- Comfortable, Soothing color
- Cut glare, sharpen focus with natural color rendition

Plum:

- Contrast, Realistic color rendition
- Excellent indoor filter
- Glare protection
- Enhanced visual acuity

Orange:

- Heightens contrasts
- Intensifies backgrounds
- Helpful for reading with Macular Degeneration

Yellow:

- Heightens contrasts
- Provides maximum brightness
- Enhance visual acuity

Rose:

- Reduce headaches and migraine symptoms for light sensitivity

Large Button Phones



- High Contrast Numbers
- Speakerphone
- Adjustable volume handset
- 3 one-dial and 10 two-dial memory buttons
- LED visual ring indicator

Price: \$26-\$30

Large Button Talking Clock



This simple looking clock announces the time when you push the easy-to-find button.

- Easy to set
- Two volume settings
- Also tells date

Price: \$18

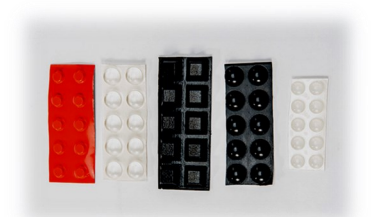
Optelec LED Magnifiers



- Handheld or stand options
- Long-lasting LED light
- Easy on/off switch
- Available in 2.5x to 13x

Price: \$70-\$75

Bump Dots-Variety of Shapes and Sizes



Allows for a variety of uses for tactile marking of everyday items such as computer keyboards, phone keypads and more.

- Multi-Pack for a variety of uses
- Different colors, sizes and shapes

Price: \$10

Writing Guides



Writing tools that will aid in everyday use from writing checks, addressing envelopes to simply signing your name.

- Check Writing Guides
- Envelope Guides
- Full Page Guides

Price: \$0.75-\$15

Talking Scales



This extra capacity (up to 550 LBS) talking bathroom scale has an extra wide 15 inch x 12 inch platform and can measure in pounds or kilograms.

- Talking function prevents falls
- Memory storage for 2 people

Price: \$52

Large Print Measuring Cups



Set of matching measuring cups and spoons offers 4 measuring cups and 6 measuring spoons. Green markings provide high contrast on black background for best visibility.

Price: \$10

Talking Calculators



- Great for low vision
- Digits measure 3/4" high
- 3 volume levels and earphone jack

Price: \$16-\$28

OttLite LED Cobra Desk Lamp



With three different color modes, this versatile light is great for any space!

- Choice of warm, cool or natural daylight
- Control brightness with the touch of a finger
- LEDs last up to 40,000 hours

Price: \$67

OrCam Read Smart/ OrCam MyEye Pro Assistive Technology

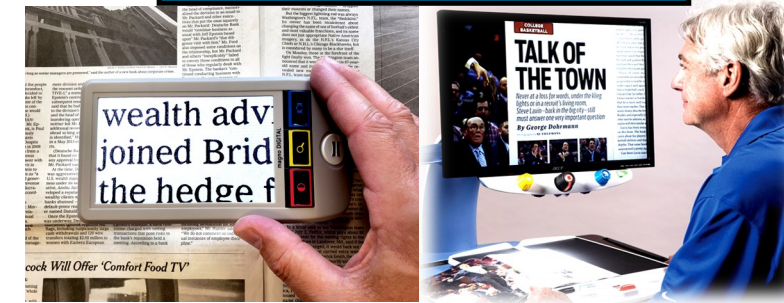


OrCam Read and OrCam MyEye Pro are products that help users live independently by assisting with daily reading tasks and more.

- Reads printed text instantly
- Identifies currency and colors
- Tells time and more!

Price: \$1,990-\$4,250

Video Magnifiers (CCTVs)



Wide variety of desktop and portable video magnifiers that provide clear image and easy operation.

- Easy to operate
- Wide range of magnification levels
- Multiple viewing modes
- Training Available

**Price: Handheld CCTVs
\$595-\$995**

**Desktop CCTVs
\$2,295-\$3,495**

Financial assistance may be available for clients through our low vision clinic. Additionally, loans may be acquired through your local credit union as well.